



# SAFEGUARDING ANNUAL ANNUAL REPORT SUMMARY 2022-2023

**NHS**  
The Royal  
Orthopaedic Hospital  
NHS Foundation Trust

# CONTENTS

- 03 Our purpose
- 04 Our team
- 04 Our governance
- 05 Our accomplishments
- 06 Our priorities
- 07 Get involved

# FOREWORD

The Safeguarding Annual Report provides an opportunity to reflect on where we need to focus our efforts in the year ahead and celebrate our achievements in 2022-2023. Despite the impact and challenges faced post Covid-19 we are assured that there has been no disruption to safeguarding provision and service provision across the Trust.

We continue to make good progress in relation to our seven safeguarding priorities as set out in our Trust in 2021-2025. Our focus is always to work in partnership to make a difference the lives of our service users, to promote autonomy, inclusion, and ultimately better health outcomes. We work collaboratively and restoratively with our partner agencies to 'Think Family' and protect all those at risk of harm, abuse, or neglect. This city-wide approach is being embedded across all our services, whilst focusing on developing evidence-based approaches to safeguarding practice that balances the rights and choices of an individual, with the Trust duties to act in their best interest to protect the patient, the public and the organisation from harm.

Safeguarding is complex and challenging and our plans for the year ahead are achievable and underpinned by the Royal Orthopaedic Hospitals Core values Respect, Compassion, Excellence, Openness, Pride, and Innovation.

The Safeguarding Team wishes to thank all our dedicated staff, our supportive partners, the Executive Team, and the Trust Board who continue to work so positively with us to ensure 'Safeguarding is Everyone's Responsibility'.

The Safeguarding Team  
The Royal Orthopaedic Hospital NHS Foundation Trust



# OUR PURPOSE

## LESS PAIN. MORE INDEPENDENCE. LIFE-CHANGING CARE.

### Our vision

Less pain.  
More independence.  
Life-changing care

### Our mission

We will deliver compassionate, patient-centred care that empowers people to regain their mobility, independence, and quality of life. Through efficiency, expertise, innovation and collaboration we will tackle health inequality and improve access to life-changing care.

### Our values



Compassion



Openness



Pride



Innovation



Excellence



Respect



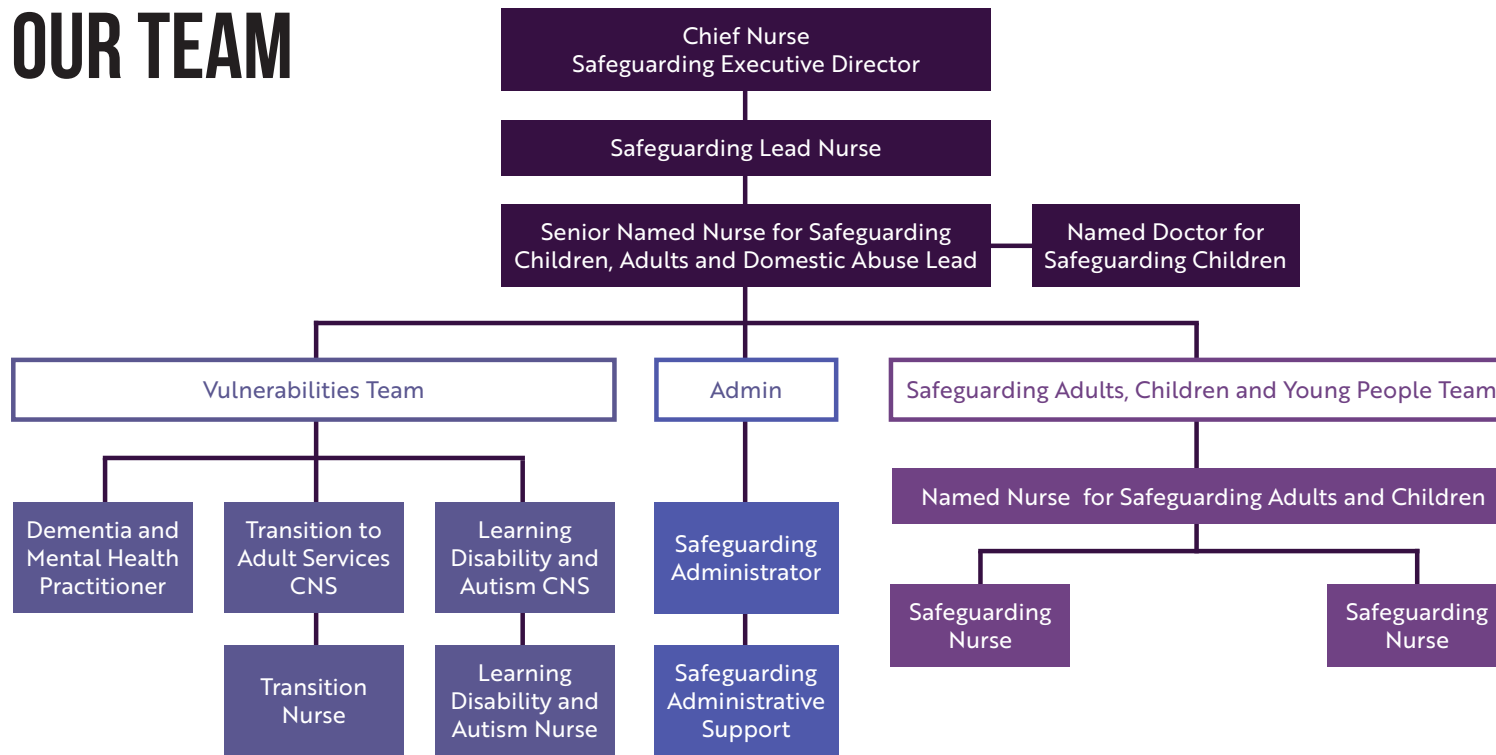
## OUR SAFEGUARDING MISSION

To provide outstanding safeguarding support and guidance to staff, patients, and visitors. To meet our national and local targets in delivering safeguarding training. To deliver safeguarding supervision to our staff allowing opportunities to reflect and use critical thinking when managing safeguarding concerns. To prevent harm and safeguard our patients, their families, communities and staff.

## OUR SAFEGUARDING VISION

To be a safe and effective organisation where all children, young people, and adults who are at risk of harm, abuse or neglect are safeguarded by staff who feel empowered, valued, and supported. Working collaboratively with our patients and their families to ensure the best support and outcome is achieved.

# OUR TEAM



# OUR GOVERNANCE

Safeguarding governance is essential for ensuring patient safety, meeting legal obligations and preventing incidents. It is a fundamental component of responsible healthcare management and service delivery. Our governance model is embedded and we regularly report externally to partners to ensure we are working as a system to keep people safe.





# OUR SAFEGUARDING ACCOMPLISHMENTS 2022-2023

Maintaining safe and effective safeguarding practices by ensuring staff have the necessary skills and knowledge.



Supporting our Safeguarding and Domestic Abuse Champions to make an impact in their departments



Expanded the Safeguarding and Vulnerability team following an investment from the Trust



Positive feedback throughout the year received from staff who attend the mandatory safeguarding training

Internal lateral checks guidance for Children and Adults embedded across the Trust.

Updated the Safeguarding Children's and Families policy, approved and commended by the Trust Board.



Positive feedback from external and internal professionals regarding the Safeguarding Children GAP analysis following the review and learning from local Child Safeguarding Practice Review (CSPR) Arthur Labinjo-Hughes and Star Hobson including recommendations by The Child Safeguarding Practice Review Panels Annual Report (2020).



Issued Children and Young People and Adults suspected non-accidental injury internal guidance.



Issued the Therapeutic Observation of adult's policy to support decision-making when depriving patients of liberty



Staff development in the team through practical training and academic courses

# OUR SAFEGUARDING ACCOMPLISHMENTS 2022-2023



Quarterly safeguarding champions day training events to help embed practice, skills and knowledge.



Safeguarding supervision embedded and regular attendance across outpatient settings and key departments.



Excellent communication through our quarterly safeguarding briefing called the Purple Paper.

Regular audits conducted to evidence good practice and highlight areas of improvement.



Routine enquiry (direct domestic abuse) question launched and embedded across three departments in the Trust



Implemented an Internal Risk Assessment tool for children to enhance critical thinking and analysis skills, and reduce risks.

Issued internal safeguarding alerts guidance to ensure staff are sharing concerns appropriately throughout the Trust.

Gillick Competency checklist used to empower young people in decision making.



Issued internal Female Genital Mutilation reporting guidance for adults and children.



Increase awareness of local and national safeguarding agenda and priorities across the Trust, using road shows and events.





# OUR SAFEGUARDING PRIORITIES FOR THE FUTURE

1



To hear the voice of adults, young people, and children

2



To make safeguarding a priority

3



To improve awareness and practice

4



Mental Capacity Act (MCA) and Deprivation of Liberty Safeguards (DoLS) are understood and embedded, implementation of Liberty Protection Safeguards (LPS)



5



To ensure a focus on transition from child to adult services

6



To demonstrate working in partnership

7



To have a safe and effective reporting workforce

# GET INVOLVED

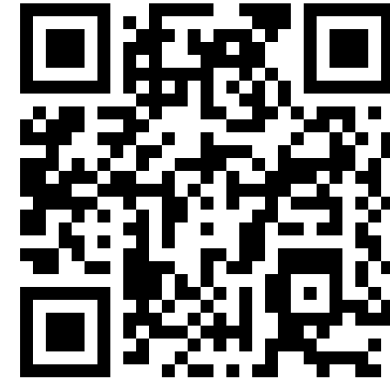
LESS PAIN

MORE INDEPENDENCE

LIFE-CHANGING CARE

Read the full  
safeguarding report

If you'd like to read our full report, please  
scan this QR code or visit [roh.nhs.uk](http://roh.nhs.uk)



## Patient Experience

We are always keen to hear from people who use our services. Our Patient Experience Team has lots of ways to listen and help you share your experience, feedback and ideas. Find out more, scan the QR code or call 0121 685 4128



If it matters to you,  
It matters to us.  
**We're listening.**



The Royal  
Orthopaedic Hospital  
NHS Foundation Trust







**The Royal  
Orthopaedic Hospital**  
NHS Foundation Trust