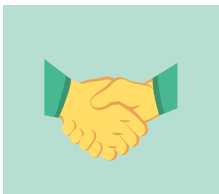
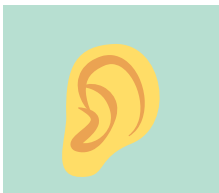


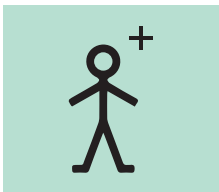
We will give the very best care to people with learning disabilities and autism.



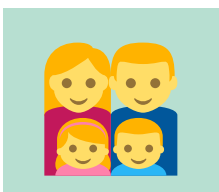
We will provide the best care by making decisions with you.



We will always listen to you.



We will make sure our team know how to care for autistic people and people with learning disabilities.



We will work with you and your family, your carer or anyone else who supports you

If you want to ask a question about your care, please visit roh.nhs.uk or call 07341 123 385